

# ProbitLine Update Webinar

## LICHTVISION ENGINEERING

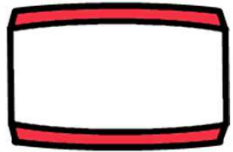
Karsten Heinrich  
Rijo Kavalakkatt

Performance and Reliability for  
connected lighting and building IoT

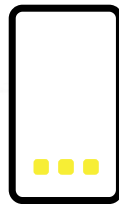
[www.lichtvision-engineering.com](http://www.lichtvision-engineering.com)

# ProbitLine Update Webinar

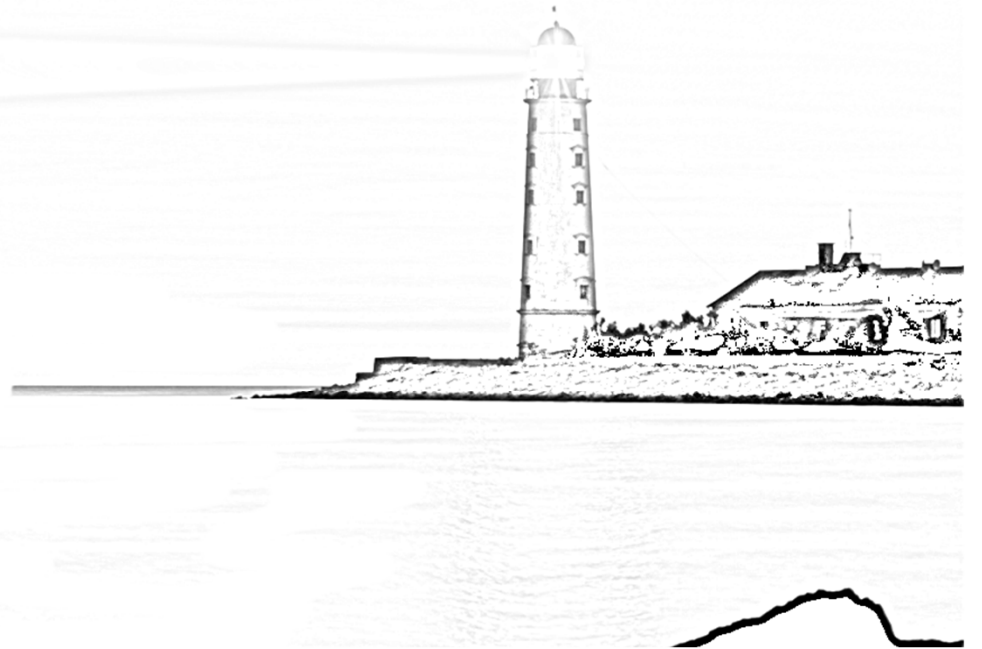
**LICHTVISION**  
ENGINEERING



ProbitGears



ProbitSite



# ProbitLine Update Webinar

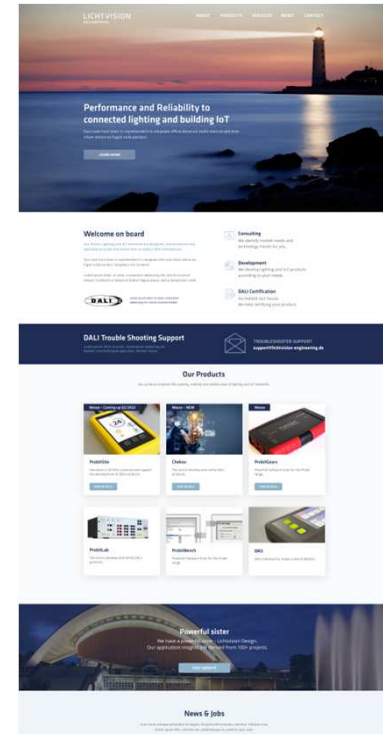
## LICHTVISION ENGINEERING

*Company* since 1998 in Berlin Germany

*Standardisation* IEC TC34 WG11 Convenor - IEC62386

*Developer* for DALI ... also IoT (dual BT-WiFi)

*Manufacturer* ProbitGears, IoT Sensor "Chekov", ProbitLab2



# ProbitLab2

ProbitLab2 tests the DALI interface

*Control Gears  
Control Devices  
Bus Power Supplies*

How to test the Application?

*Installation Setup  
Lots of Luminaires  
...very limited*

Lichtvision's smart solution...



# ProbitGears

*“We invented it, because we needed it.”*

## The triggering project: “DALI Gateway”

*Verify the correct handling of up to 64 luminaires.*

*How to create a short address conflict.*

*Emergency devices with 24h charging cycle.*

We do believe, many other developer share the very same needs.

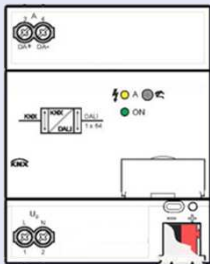


# How it works

*With just two connections the whole test setup is done.*

## DUT

*Anything meant to control luminaires  
Maybe a DALI application controller.*



## ProbitGears

*Real time platform  
DALI terminals ⇄ ⇄ USB connector*



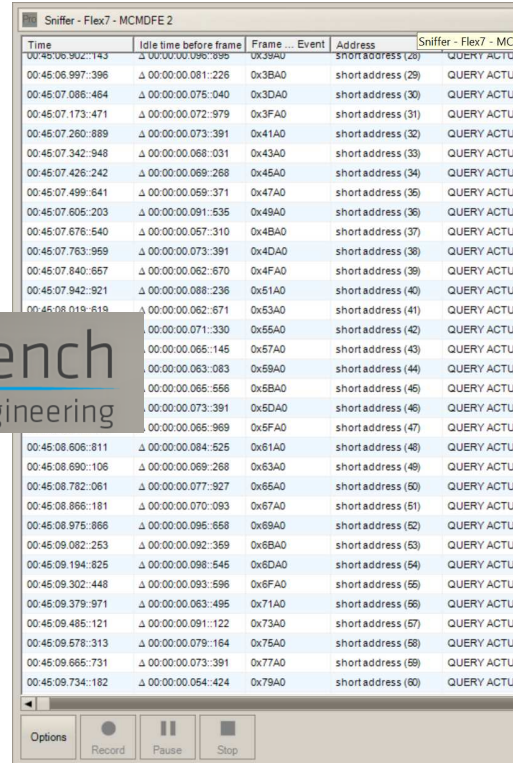
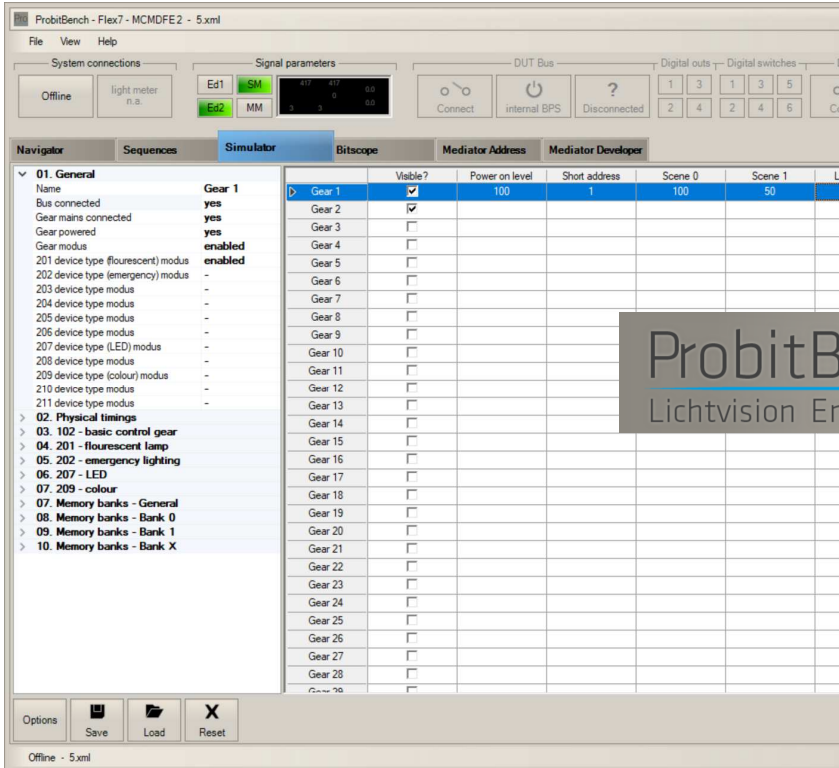
## Personal Computer

*Visualize all control gears' variables  
Change anything at run time*



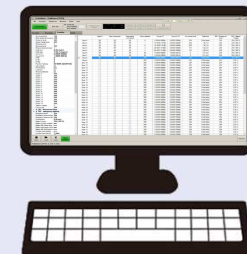
# ProbitBench

Everything comes together in the ProbitBench.



## Personal Computer

Works with **ProbitBench**, because some functionality like the Sniffer is shared with other Probit devices.



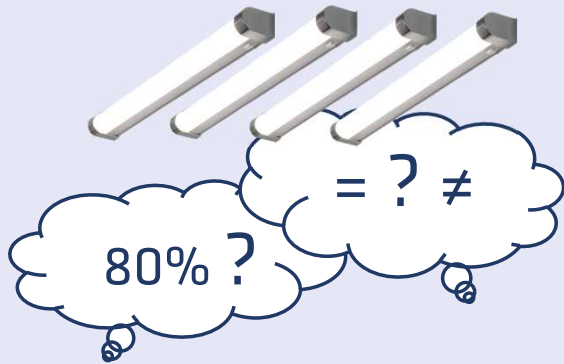


# See the invisible

For FadeTime, Level, Scene, ...

With a bunch of real luminaires...

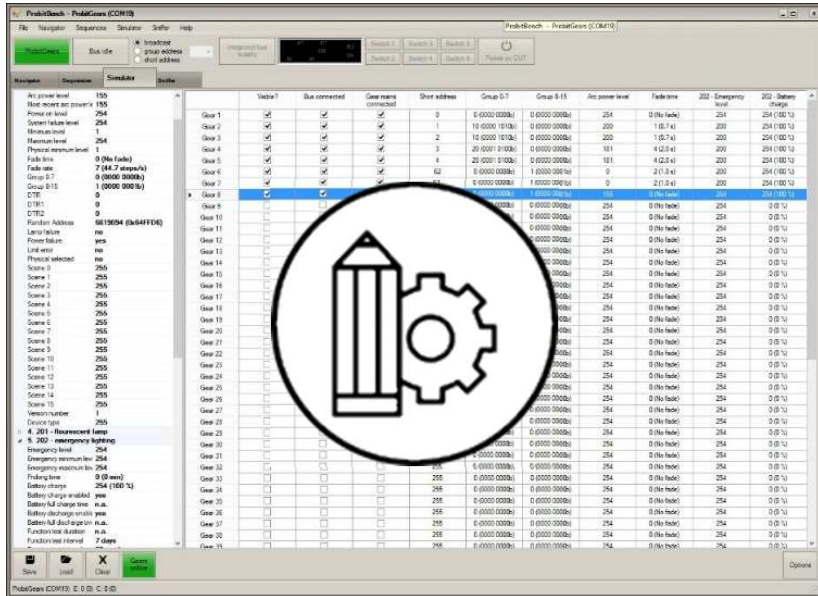
- *it is impossible to identify a certain light level.*
- *Practically all variables are invisible, like scene levels, fade times, groups and so on.*





# Runtime control

Change the situation like a real application do



Introduce individual characteristics of certain manufacturer's devices or even make them act erratic.

Out of the blue you can:

- Remove a short address
- Generate an address conflict
- Set bit timings and answer delays
- Select supported device types
- Change any variable of the gear



# Emergency Batteries

*Shorten Test Times to a level, making such tests possible for the first time ever.*

*Multiple repetitions of real battery duration test are not feasible.*

*No chance to test this at all.*

**Adapt the simulation itself !**

*Select the discharge and recharge time.*

*Set your desired rated duration.*

*Repeat your testing as often as needed within minutes.*

*This is the first time ever such test becomes possible.*

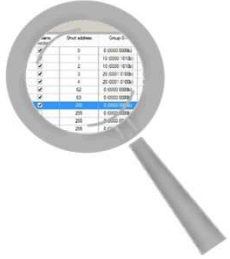


# Hands On

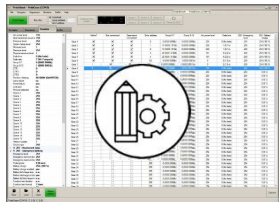


# Pricing

Starting at € 3900 with ProbitBench included - 60€/gear only. And choose from many great add-ons.



65 Gears  
€ 3900



Hardware + Control Gear part 102

|                 |          |
|-----------------|----------|
| Emergency (DT1) | + 2900 € |
| LED (DT6)       | + 2600 € |
| Colour (DT8)    | + 2900 € |



Add-ons can be purchased later as required. Installation via code file.

# Probit for the Lab

## Tools for the Lab

*ProbitLab2 ⇔ Interface*

*ProbitGears ⇔ Application*

## How to test the Installation?

*leave the lab and go to the site  
engineers do not leave the lab*

*installer has to do it*

## Lichtvision's smart solution...



# ProbitSite

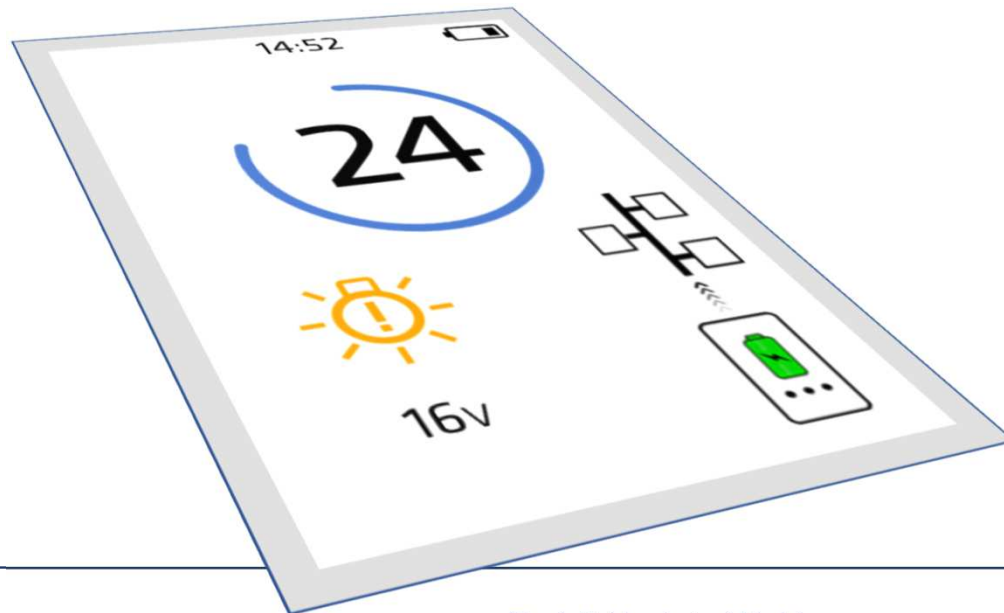
*"Just as easy as a voltmeter."*



- ✓ Turn on
- ✓ Connect
- ✓ Read off

# Display

- ✓ Large 3.5" Display
- ✓ High Luminance
- ✓ Simple Icons

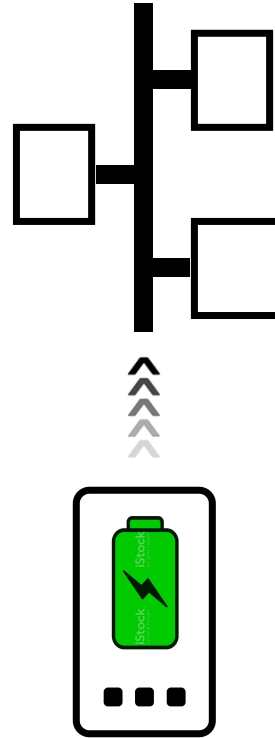


- *The project is often worked under time pressure and on the ladder at a great height I certainly don't need a weak little display.*
- *The ProbitSite's large and bright display and simple graphical icons allow me to see everything at a glance.*



# Bus Power Supply

- ✓ Integrated
- ✓ Min. 200mA
- ✓ Smart Connect



- *Nothing works on the DALI bus without a bus power supply! If I want to check my system, I don't want to have to worry about how the bus is powered.*
- *The ProbitSite does this for me. Its integrated bus power supply switches on automatically when required and is switched off when there is already a supply on the bus.*

# Smart Scan

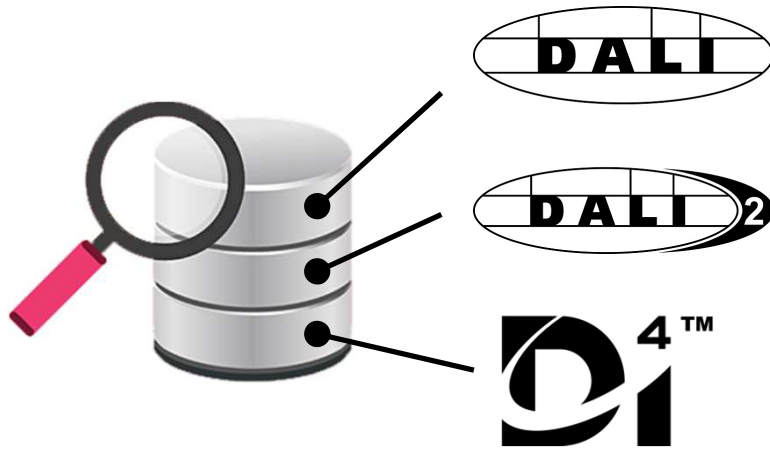
- ✓ The ProbitSite can track and read any device without changing anything.



- *Control Gears + 2xx*
- *Input Devices + 3xx*
- *Application Controller*
- *Bus Power Supplies + 250*

# Certification Check

- ✓ Checks all components and marks devices without an entry in the DiiA database.



- *I can't always decide which components go to the construction site. I also don't know which electronic ballast was installed in a lamp.*
- *The "Certification Check" finds non-certified products. These are sometimes not fully tested and can therefore still contain errors that often only become apparent when the system is in operation.*
- *Scenes 1-4 work perfectly, but surprisingly scene 5 doesn't...*

# Signal Check

- ✓ ProbitSite makes visible what otherwise only an expert with an oscilloscope can see: poor signals.



- *The standard defines exactly what the signals on the bus must look like so that everyone understands everyone else.*
- *If a device does not comply with these specifications, it is possible that others will no longer understand it with certainty. Such errors might show up later sporadically during operation.*
- *The ProbitSite checks the signals according to the standard and gives advance warning if something is wrong.*

# Proof

- ✓ Readings are intelligently merged into a manufacturer-independent protocol.

| 41 Level 1 - North Wing 2020-01-14 / 14:25 |    |    |  |                    |
|--|----|----|--|--------------------|
| 67   | 1  | AC | OSRAM GmbH DALI PRO 2 IoT                                | 101, 103           |
| 68   | 4  | ID | OSRAM GmbH DALI SENSOR LS/PD LI UF G2                    | 101, 103, 303, 304 |
| 69   | 14 | CG | OSRAM GmbH ETI DALI 35/220-240/700 LT2                   | 101, 102, 207      |
| 70   | 22 | CG | OSRAM GmbH OTi DALI 75/220-240/700 D NFC TW L            | 101, 102, 207, 209 |
| 28 Level 1 - North Wing 2020-01-14 / 14:41 |    |    |  |                    |
| 71   | 1  | AC | OSRAM GmbH DALI PRO 2 IoT                                | 101, 103           |
| 72   | 27 | CG | HYTRONIK DALI-2 Constant current LED driver DT8, Max 45W | 101, 102, 207, 209 |

|    |               |    |               |  |  |
|----|---------------|----|---------------|--|--|
| 69 |               | 72 |               |  |  |
| 1  | 223-4573-3456 | 1  | 223-4573-3456 |  |  |
| 2  | 223-4573-3456 | 2  | 223-4573-3456 |  |  |
| 3  | 223-4573-3456 | 3  | 223-4573-3456 |  |  |
| 4  | 223-4573-3456 | 4  | 223-4573-3456 |  |  |
| 5  | 223-4573-3456 | 5  | 223-4573-3456 |  |  |
| 6  | 223-4573-3456 | 6  | 223-4573-3456 |  |  |
| 7  | 223-4573-3456 | 7  | 223-4573-3456 |  |  |
| 8  | 223-4573-3456 | 8  | 223-4573-3456 |  |  |
| 9  | 223-4573-3456 | 9  | 223-4573-3456 |  |  |
| 10 | 223-4573-3456 | 10 | 223-4573-3456 |  |  |
| 11 | 223-4573-3456 | 11 | 223-4573-3456 |  |  |
| 12 | 223-4573-3456 | 12 | 223-4573-3456 |  |  |
| 13 | 223-4573-3456 | 13 | 223-4573-3456 |  |  |
| 14 | 223-4573-3456 | 14 | 223-4573-3456 |  |  |
|    |               | 15 | 223-4573-3456 |  |  |
| 70 |               | 16 | 223-4573-3456 |  |  |
| 1  | 223-4573-3456 | 17 | 223-4573-3456 |  |  |
| 2  | 223-4573-3456 | 18 | 223-4573-3456 |  |  |
| 3  | 223-4573-3456 | 19 | 223-4573-3456 |  |  |
| 4  | 223-4573-3456 | 20 | 223-4573-3456 |  |  |
| 5  | 223-4573-3456 | 21 | 223-4573-3456 |  |  |
| 6  | 223-4573-3456 | 22 | 223-4573-3456 |  |  |

- I always connect the ProbitSite after installing a few devices. This way I can isolate a faulty device much faster.
- The ProbitSite notices that I'm still working on the same bus line and updates its log.
- In the end, I get a precise picture of my installation, no matter where and how often I have used the ProbitSite.

# What is all this good for?

## Eliminate trivial errors

- ❌ *A broken control gear or a loose wire...*
- *If there's an error, I'll **find it right away***
- ✅ *I do not have to return to track down errors and fix them later.*

## Unmask false errors

- ❌ *Others later might claim I made a mistake...*
- *My **log** shows that everything is connected **correctly**, and which **components** were installed.*
- ✅ *In the event of a dispute, I have a secure position.*

## Prevent potential errors

- ❌ *Some problems only appear later in operation...*
- *The Signal Check detects **hidden weaknesses**.*
- *The Certification Check shows non-**certified** devices.*
- ✅ *My customer satisfaction increases.*

# Pricing

Purchase the hardware and all the software is included.



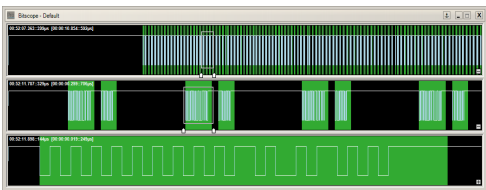
|  |    |    |            |   |                 |        |
|--|----|----|------------|---|-----------------|--------|
| 41 Level 1 - North Wing 2020-05-14 / 14:25 |    |    |            |   |                 |        |
| 07   | 1  | AC | OSRAM GmbH | DALI PRO 2 6W                                 | 101.103         | DALI-2 |
| 08   | 4  | ID | OSRAM GmbH | DALI SENSOR 1.5-PRO 110V G2                   | 101.103.201.104 | DALI-2 |
| 09   | 14 | EG | OSRAM GmbH | ETI DALI 16/220-240/700 L12                   | 101.102.207     | DALI-2 |
| 10   | 22 | EG | OSRAM GmbH | ETI DALI 16/220-240/700 DMFC TWL              | 101.102.207.209 | DALI-2 |
| 29 Level 1 - North Wing 2020-05-14 / 14:41 |    |    |            |   |                 |        |
| 71   | 1  | AC | OSRAM GmbH | DALI PRO 2 6W                                 | 101.103         | DALI-2 |
| 72   | 27 | EG | HYTRONIK   | DALI 2 Control Current LED driver DTR Max 60W | 101.102.207.209 | DALI-2 |

“Just as easy as a voltmeter.”

€ 649



Going back to the construction site just once is more expensive.



| Time             | Size | Time before frame | Frame            | Event  | Address   | Command / Data         | Evaluation                    |
|------------------|------|-------------------|------------------|--------|-----------|------------------------|-------------------------------|
| 00:52:16.696:531 | ...  | ...               | 00:00:00:049:483 | DiffFB | broadcast | QUERY CONTENT DTRO     |                               |
| 00:52:16.676:971 | ...  | ...               | 00:00:00:006:763 | DAAA   | -         | DAAA / 170 / 10101010b | DTR0 = DAAA / 170 / 10101010b |
| 00:52:16.676:243 | ...  | ...               | 00:00:00:049:912 | DiffFB | broadcast | QUERY CONTENT DTRO     |                               |
| 00:52:16.697:236 | ...  | ...               | 00:00:00:006:906 | DAAA   | -         | DAAA / 170 / 10101010b | DTR0 = DAAA / 170 / 10101010b |
| 00:52:16.766:061 | ...  | ...               | 00:00:00:061:366 | DiffFB | broadcast | QUERY CONTENT DTRO     |                               |
| 00:52:16.777:078 | ...  | ...               | 00:00:00:006:840 | DAAA   | -         | DAAA / 170 / 10101010b | DTR0 = DAAA / 170 / 10101010b |
| 00:52:16.836:019 | ...  | ...               | 00:00:00:061:482 | DiffFB | broadcast | QUERY CONTENT DTRO     |                               |
| 00:52:16.866:977 | ...  | ...               | 00:00:00:006:770 | DAAA   | -         | DAAA / 170 / 10101010b | DTR0 = DAAA / 170 / 10101010b |
| 00:52:16.912:886 | ...  | ...               | 00:00:00:048:417 | DiffFB | broadcast | QUERY CONTENT DTRO     |                               |





# ProbitLine Update Webinar

## ProbitLab2

*test the interface*

## ProbitGears

*test the application  
make testing possible*

## ProbitSite

*leave the lab and go to the site  
installer can test on site*

## Lichtvision's smart solutions



# ProbitLine Update Webinar

LICHTVISION  
ENGINEERING

See You next Time

Performance and Reliability for  
connected lighting and building IoT

[www.lichtvision-engineering.com](http://www.lichtvision-engineering.com)

